
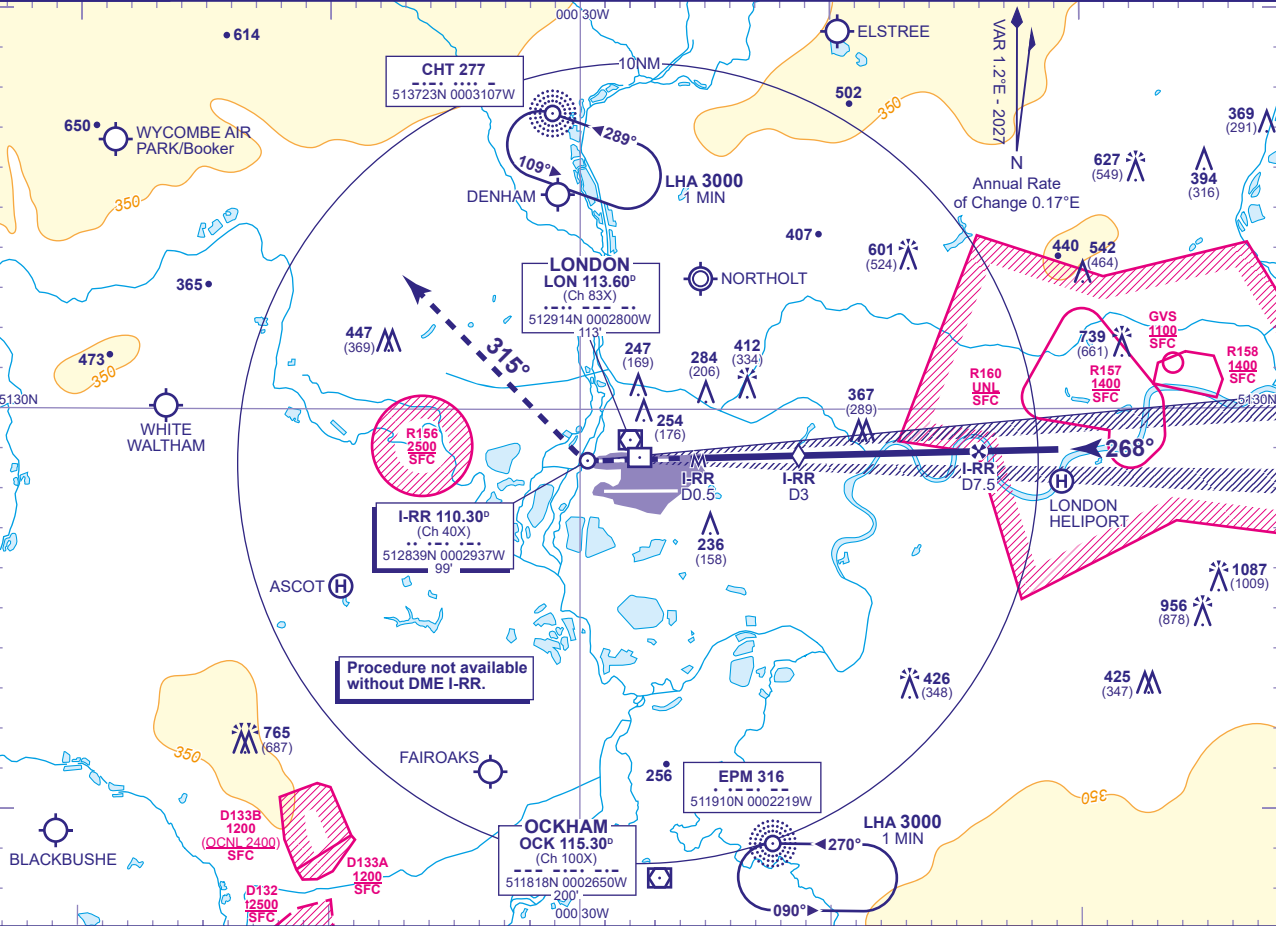


INSTRUMENT APPROACH - ICAO

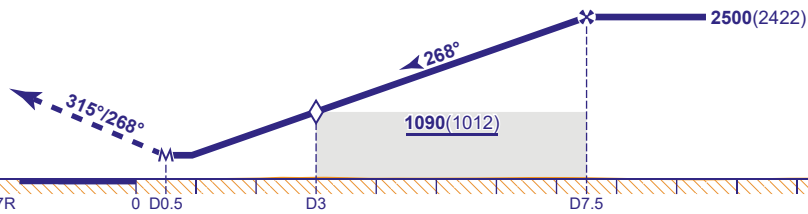
LONDON HEATHROW  
LOC/DME I-RR  
RWY 27R  
(ACFT CAT A,B,C,D)

 <div>MSA 25NM LON VOR</div>	APP 119.730, 120.400, 127.525, 134.980	HEATHROW DIRECTOR	AD ELEVATION	83	LOC/DME I-R RWY 27R (ACFT CAT A,B,C,D)
	TWR 118.505, 118.705, 124.480	HEATHROW TOWER	THR ELEVATION	78	
	RAD 125.625, 127.525	HEATHROW RADAR	OBSTACLE ELEVATION		
	ATIS 128.080, 113.750, 117.000	HEATHROW INFORMATION	1087 AMSL (1009) (ABOVE THR)		
				BEARINGS ARE MAGNETIC	



RECOMMENDED PROFILE Gradient 5.2%, 318FT/NM							
DME I-RR	7	6	5	4	3 (SDF)	2	1
ALT(HGT)	2370(2292)	2050(1972)	1730(1652)	1410(1332)	1090(1012)	770(692)	450(372)

**MAPt I-RR DME 0.5**  
Climb to 3000 - straight ahead until passing 1580 or I-RR DME zero inbound whichever is later, turn right onto track 315°. Continue as directed.  
RADIO FAILURE: On passing LON DME 10 turn right to NDB CHT at 3000.



Aircraft Category		A	B	C	D	Rate of descent	G/S KT	160	140	120	100	80
OCA (OCH)	Procedure	640(562)	640(562)	640(562)	640(562)		FT/MIN	850	740	640	530	420
VM(C)OCA (OCH AAL)	Total Area	770(687)	770(687)	940(857)	940(857)							

- NOTES**  
1 Aircraft will normally be radar vectored from the STAR Holding/Initial Approach Fixes.  
2 All pilots must follow and adhere to recommended profiles.